

RD122 - Leonardo+ Schematic

	Originator	Approval	Quality
Name	Christen Simonsen	Jens Christian Lindof	
Date	02-10-03	02-10-03	
Signature			

"THIS DOCUMENT IS CLASSIFIED EAR99 IN COMPLIANCE WITH THE U.S.G DUAL USE GOODS EXPORT CONTROL REGULATION, AND NOT ACCORDING TO E.U EXPORT CONTROL REGULATIONS, AND THEREFORE DOESN'T REQUIRE ANY U.S OR E.U EXPORT LICENSE APPLICATION".

HISTORY

Version	Date	Author	Notes
1.0	04-06-03	Christen Simonsen	1.
2.0	20-10-03	Christen Simonsen	2.

NOTES :

1. Leonardo+ schematic used for RD325 ver. 1.0.
2. This schematic fits the Leonardo+ rev. 04 PCB layout

Contents

Originator..... 1
Name 1
Date..... 1
Signature 1

1. Introduction 4

2. Leonardo+ Schematics and component placement..... 5

1. Introduction

The following pages contain the Leonardo+ schematics.

2. Leonardo+ Schematics and component placement

Rita QB RF

600 Rita QB RF

700 Miscellaneous

700 Miscellaneous

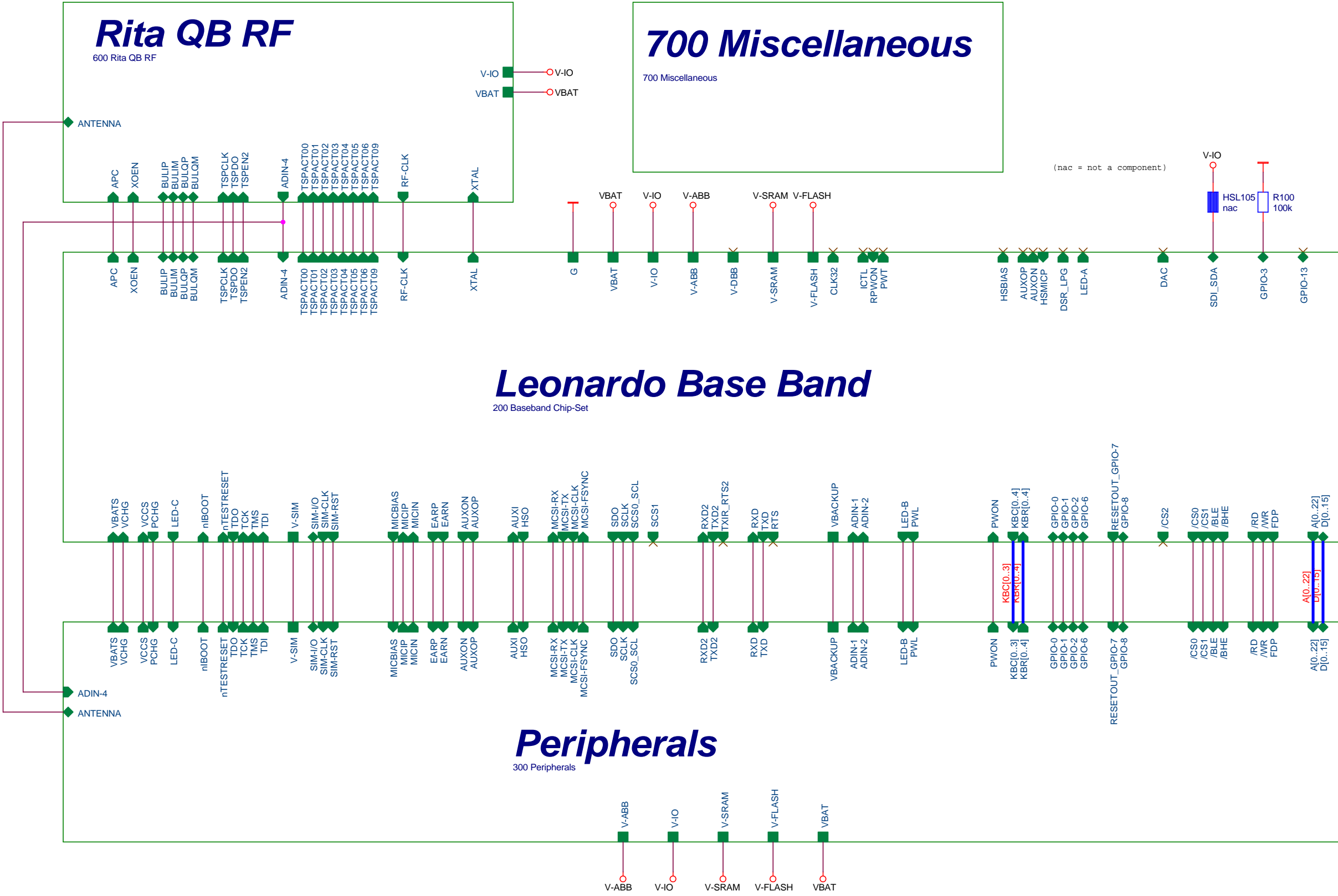
Leonardo Base Band

200 Baseband Chip-Set

Peripherals

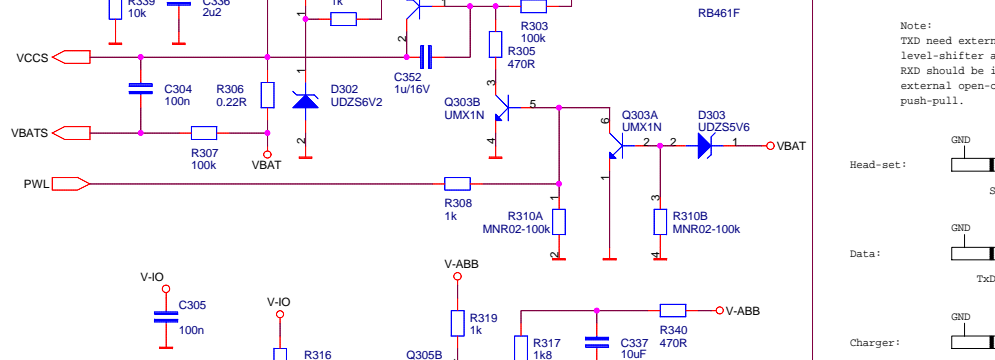
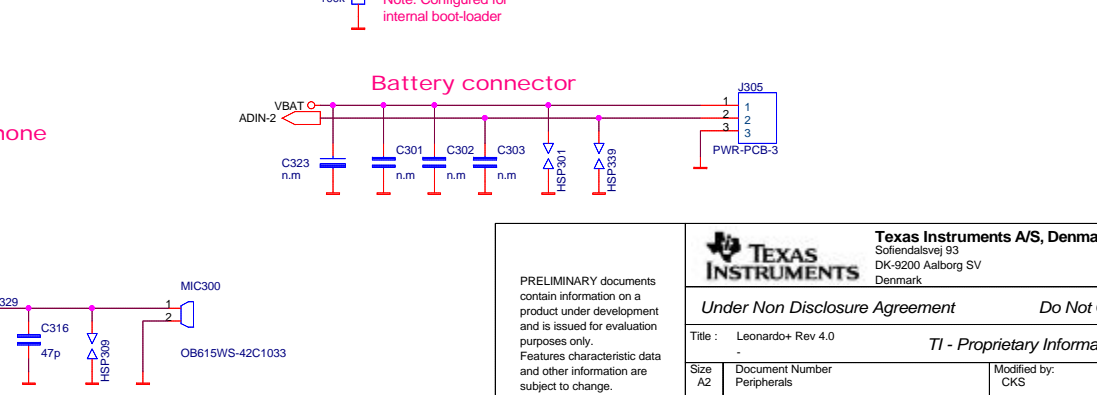
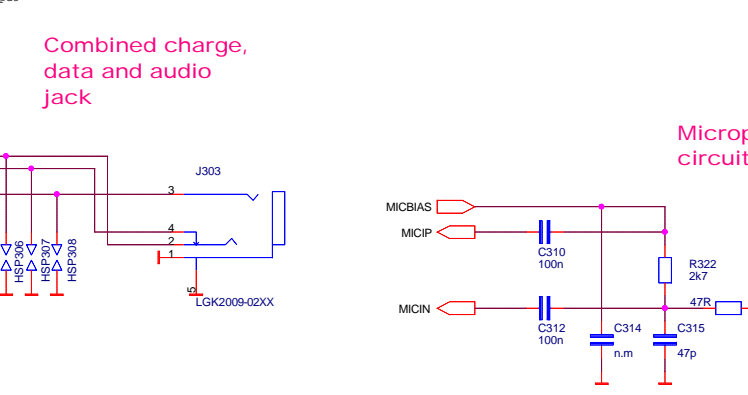
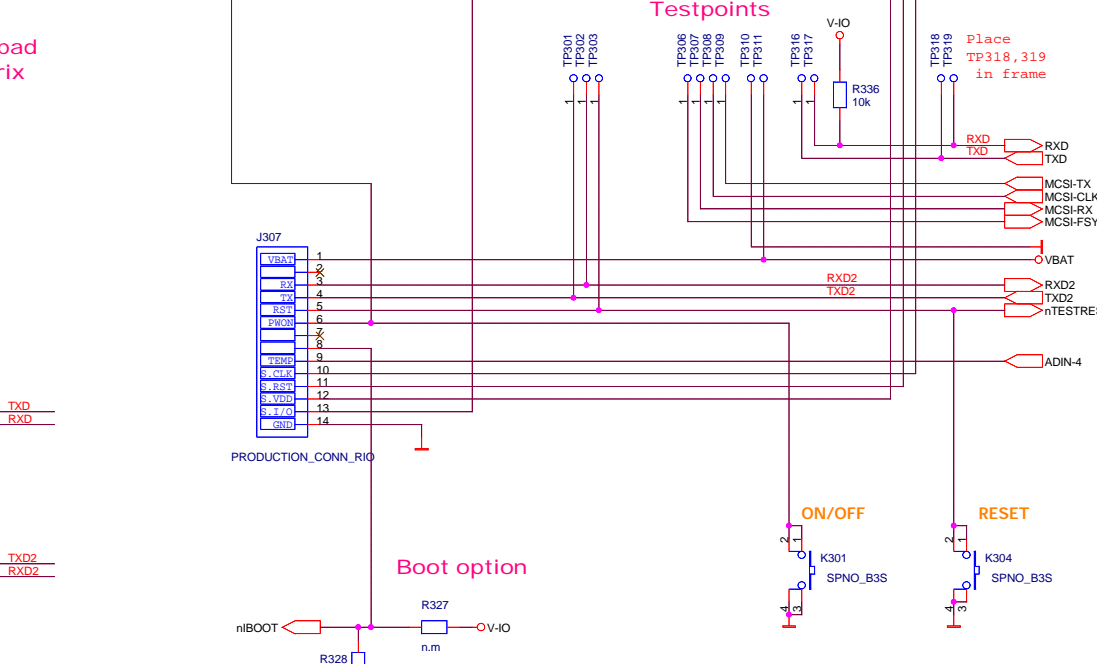
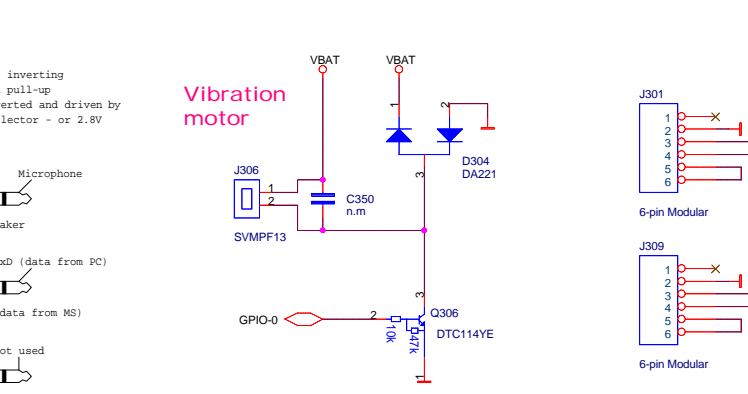
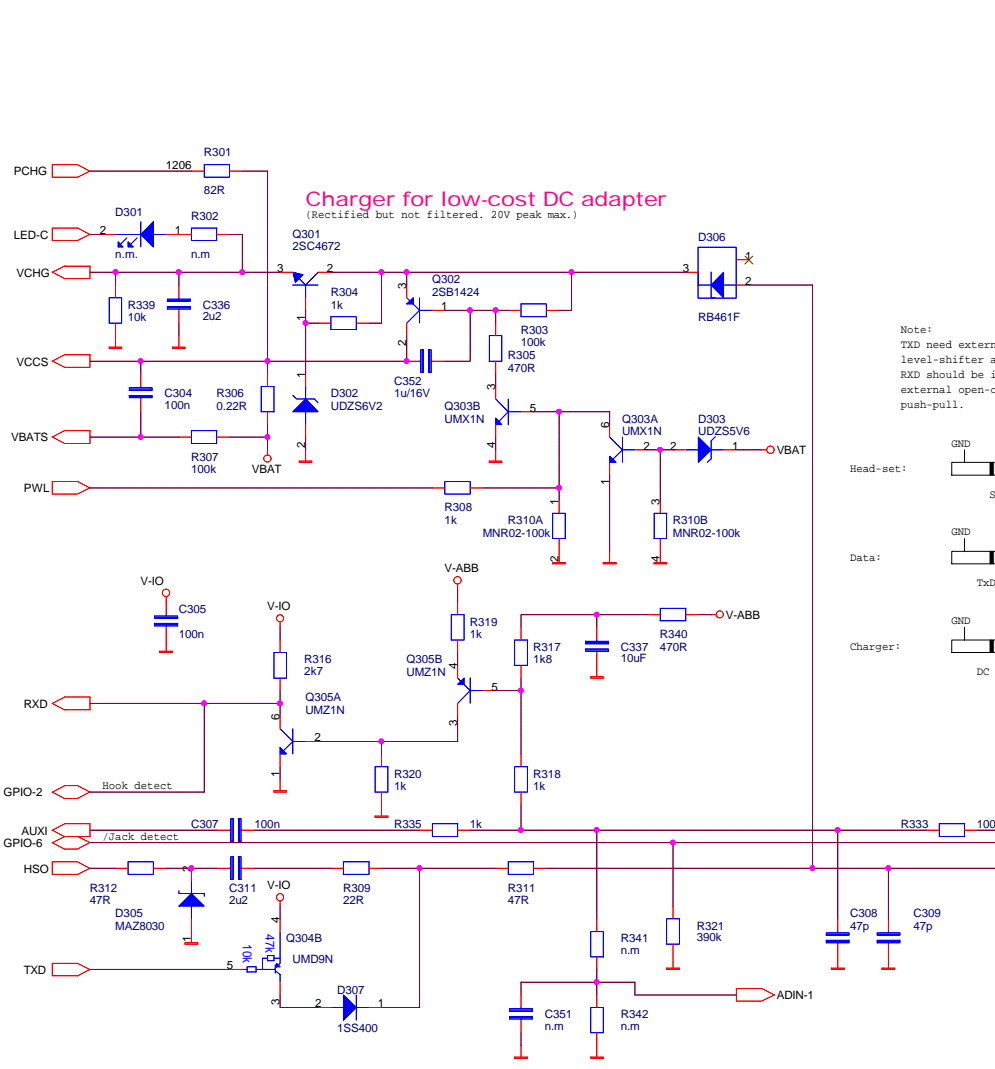
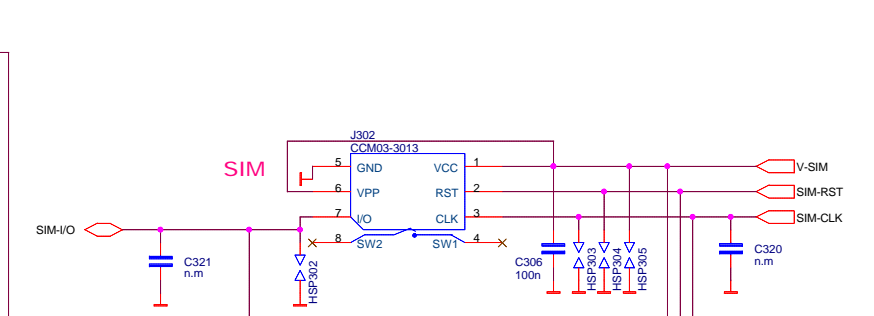
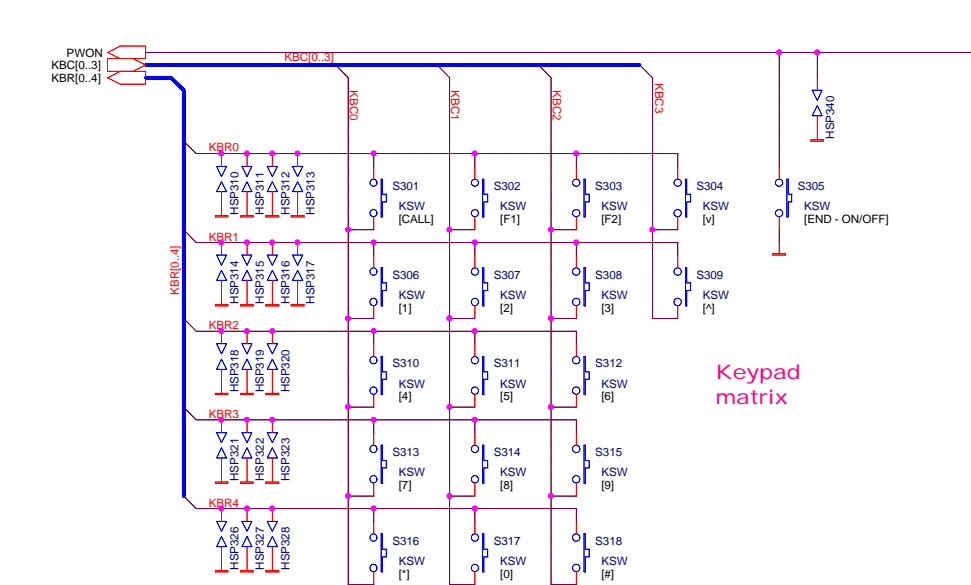
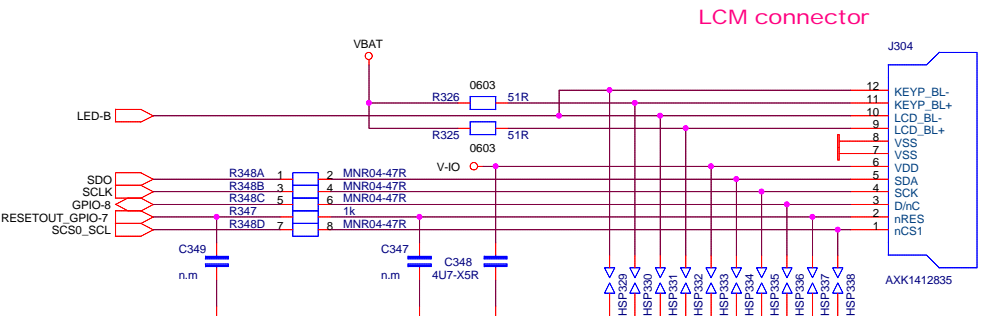
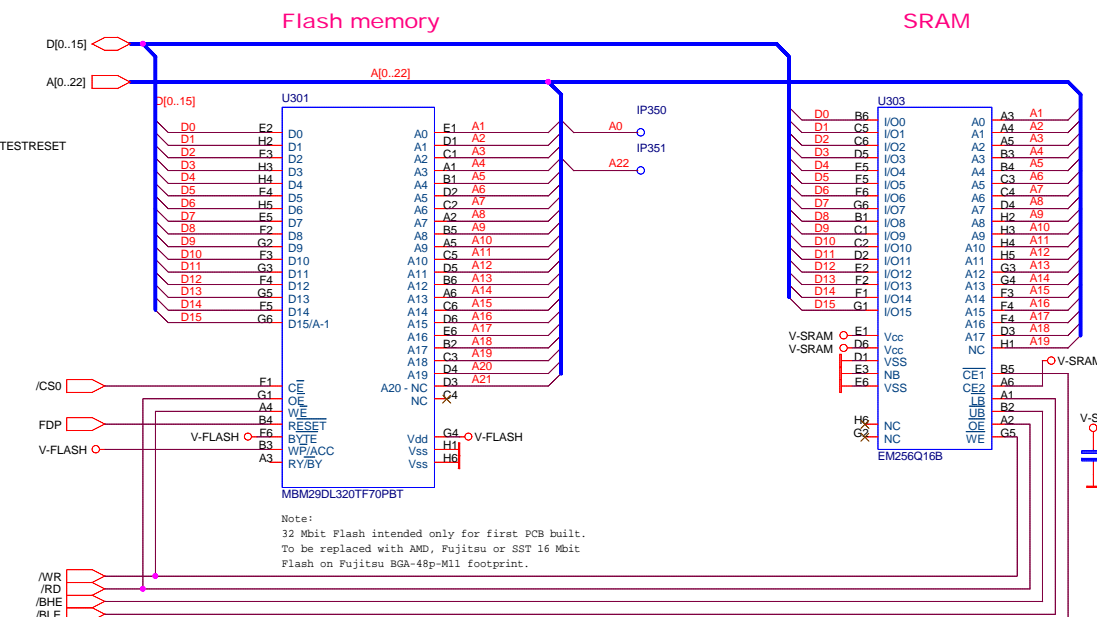
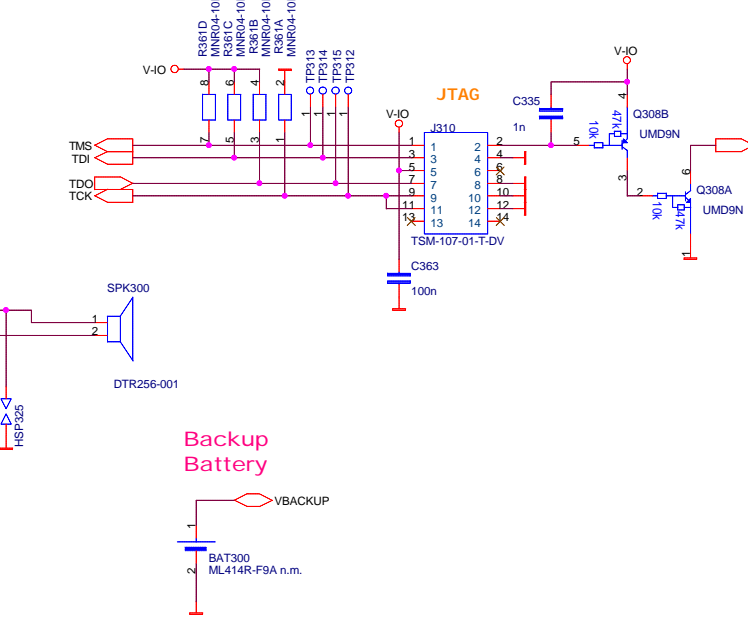
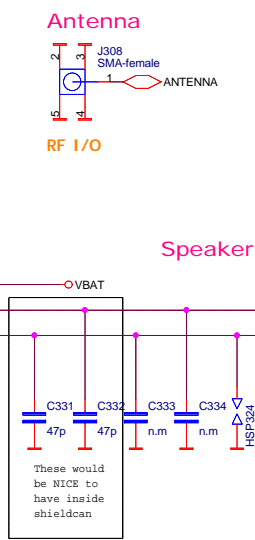
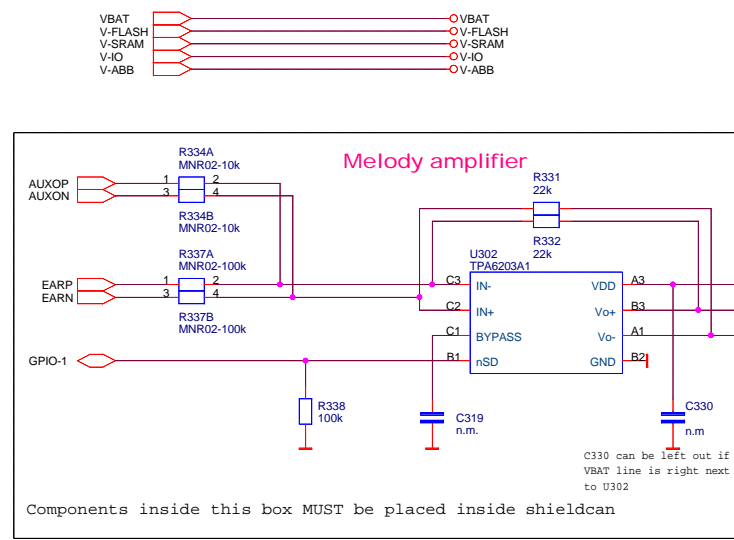
300 Peripherals

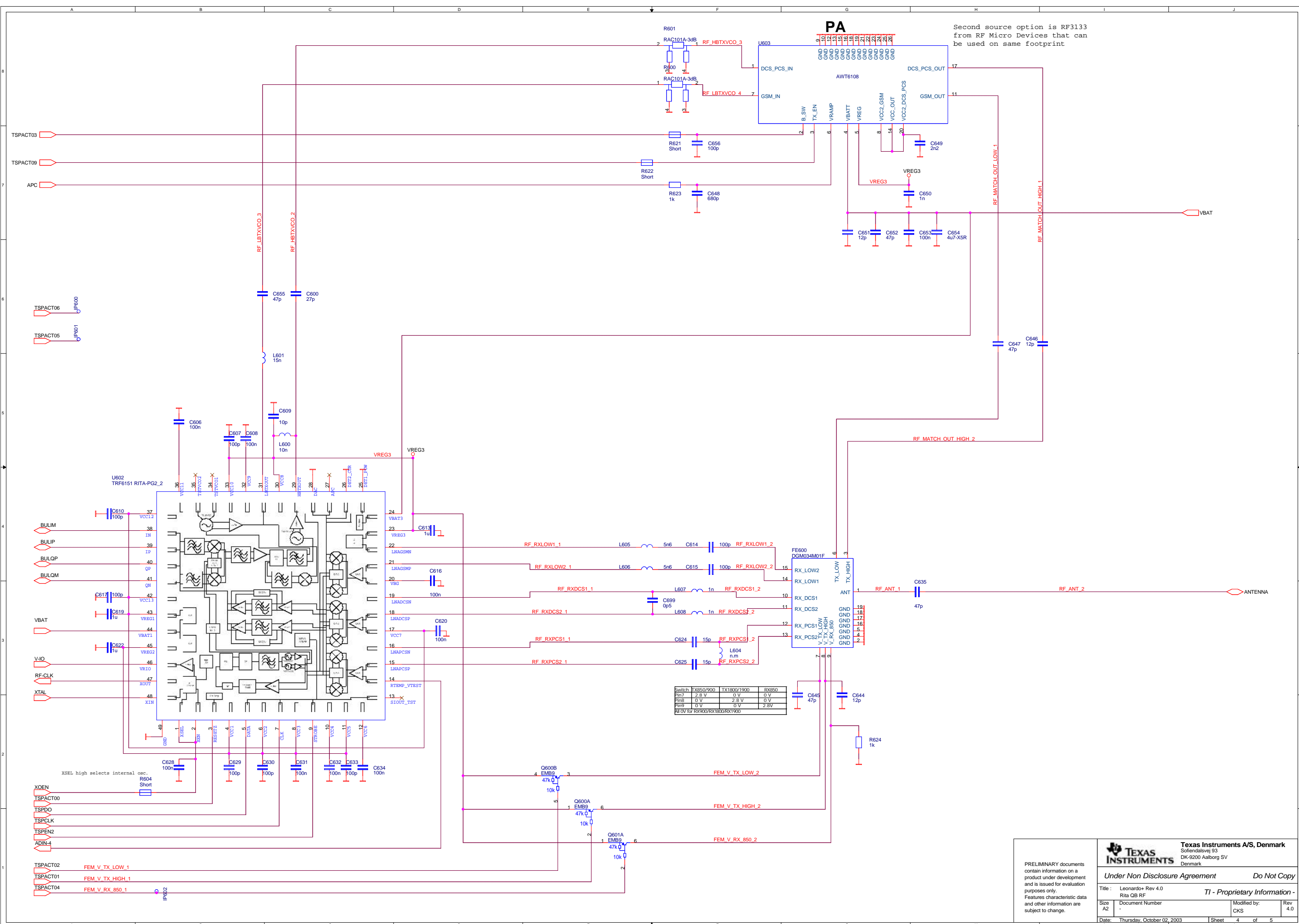
(nac = not a component)



PRELIMINARY documents contain information on a product under development and is issued for evaluation purposes only. Features characteristic data and other information are subject to change.

		Texas Instruments A/S, Denmark Sofiendalsvej 93 DK-9200 Aalborg SV Denmark	
Under Non Disclosure Agreement Leonardo+ Rev 4.0		Do Not Copy TI - Proprietary Information -	
Title : Top schematic			
Size A3	Document Number -	Modified by: CKS	Rev 4.0
Date: Thursday, October 02, 2003		Sheet 1 of 5	





Second source option is RF3133 from RF Micro Devices that can be used on same footprint

Switch	TX850/900	TX1800/1900	RX850
Pin7	2.8V	0V	0V
Pin8	0V	2.8V	0V
Pin9	0V	0V	2.8V

0V for RX900/RX1800/RX1900

PRELIMINARY documents contain information on a product under development and is issued for evaluation purposes only. Features characteristic data and other information are subject to change.

TEXAS INSTRUMENTS
Sofiedalsvej 93
DK-9200 Aalborg SV
Denmark

Under Non Disclosure Agreement Do Not Copy

Title : Leonardo+ Rev 4.0
Rita QB RF
TI - Proprietary Information -

Size A2	Document Number	Modified by: CKS	Rev 4.0
Date: Thursday, October 02, 2003	Sheet 4	of 5	

M700



Leonardo_RF_frame
6500.0043

M702



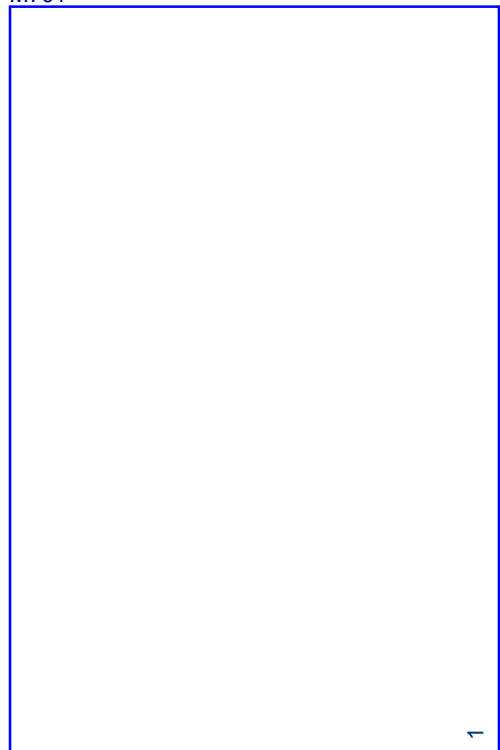
Leonardo_RF_shield
6500.0045

P700



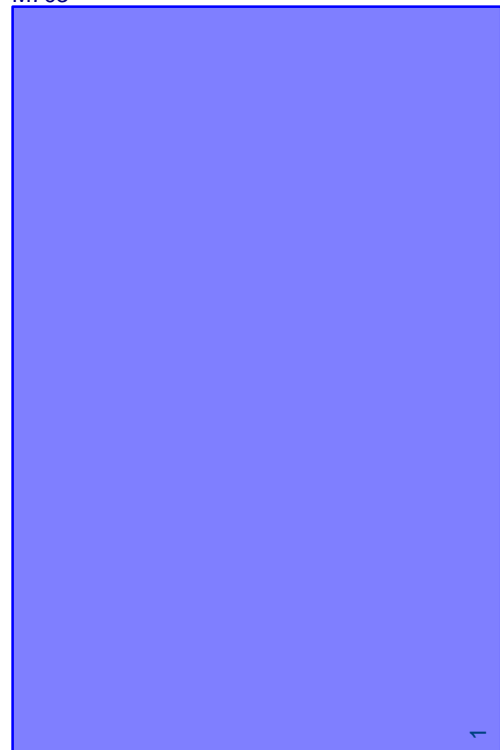
Leonardo+_RF3133_PCB_rev4
1800.0404

M701



Leonardo_BB_frame
6500.0042

M703



Leonardo_BB_shield
6500.0044

D

D

C

C

B

B

A

A

PRELIMINARY documents contain information on a product under development and is issued for evaluation purposes only. Features characteristic data and other information are subject to change.



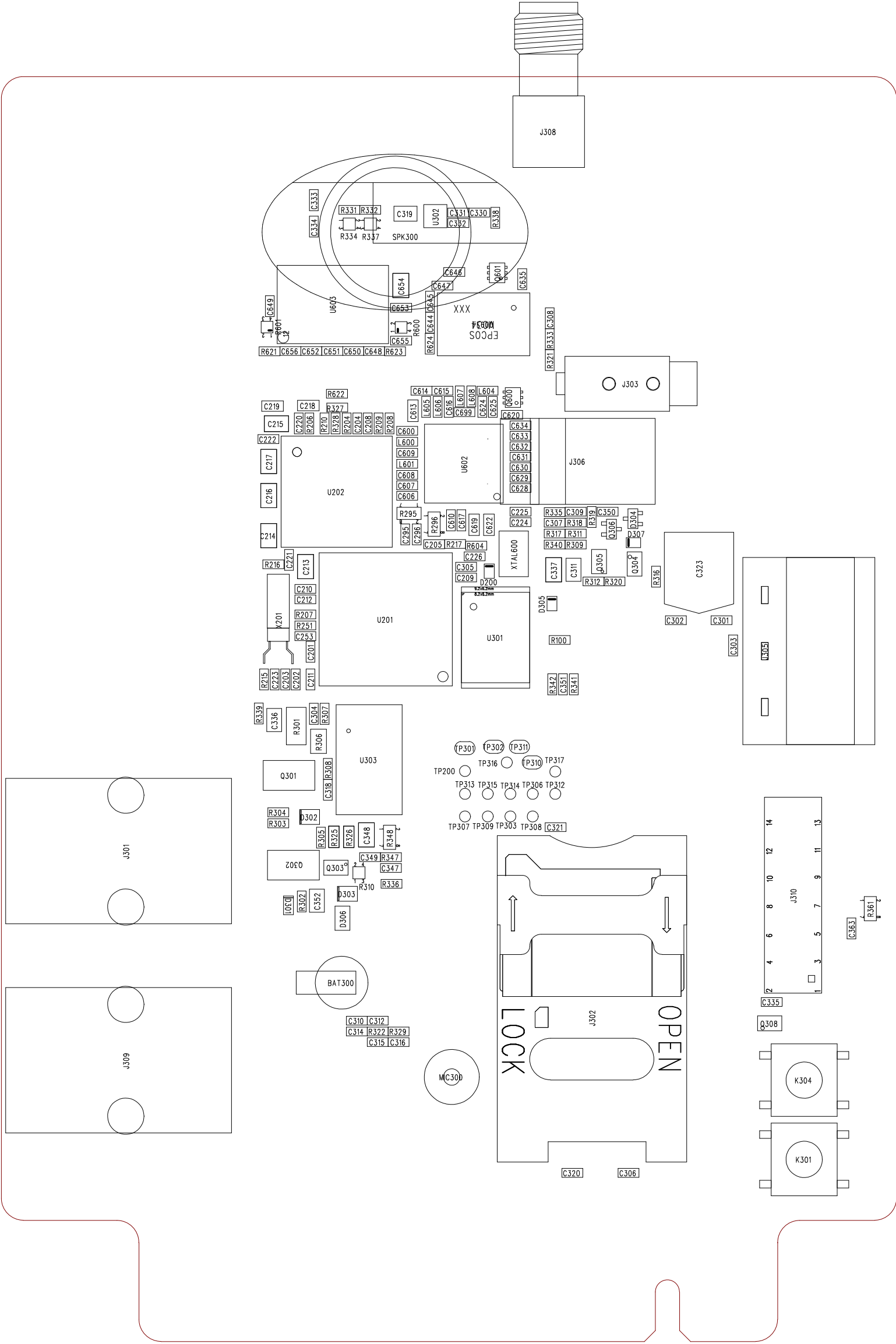
Texas Instruments A/S, Denmark
Sofiendalsvej 93
DK-9200 Aalborg SV
Denmark

Under Non Disclosure Agreement

Do Not Copy

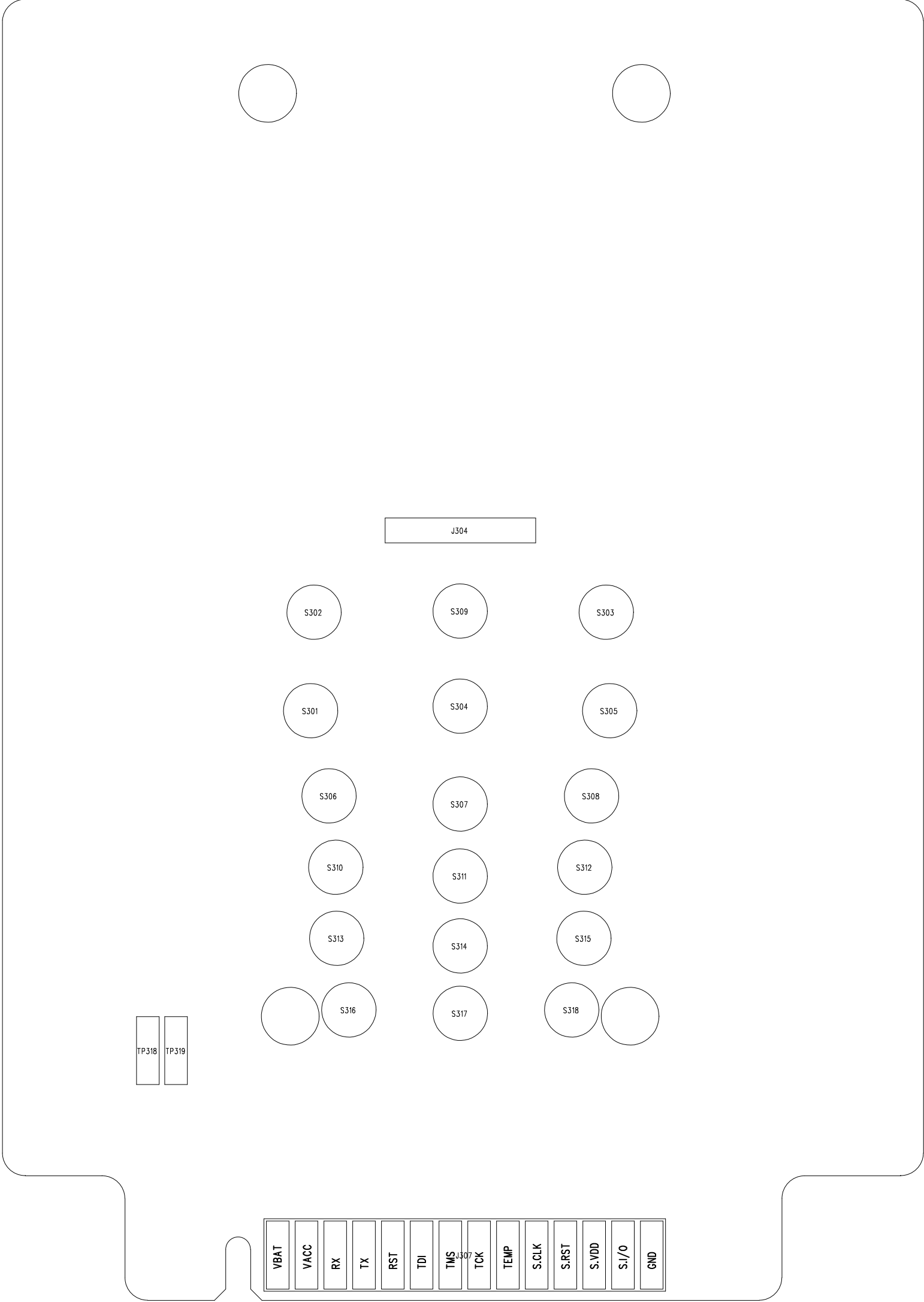
Title : Leonardo+ Rev 4.0 Miscellaneous *TI - Proprietary Information -*


Size A4	Document Number -	Modified by: CKS	Rev 4.0
------------	----------------------	---------------------	------------



Project : LEONARDO LE+		Title : Component layout bottom	
File name : LE+-453.GBR/PDF			
Revision : 4	INIT : KKn		
Scale : 3 : 1	Date : 03.06.12		





Project : LEONARDO LE+		 TEXAS INSTRUMENTS	
File name : LE+-452.GBR/PDF			
Revision :	4	INIT :	KKn
Scale :	3 : 1	Date :	03.06.12
			title : Component layout top